

HERITAGE WESTERN CAPE

DECLARATION OF HERITAGE RESOURCES AS A PROVINCIAL HERITAGE SITE

In terms of Section 27(6) of the National Heritage Resources Act, No. 25 of 1999, and by virtue of a resolution of the Council of Heritage Western Cape dated 28 September 2020, **Erf 661, "the Langa Pass Office", corner of King Langalibalele Drive and Lerotholi Avenue, Langa, Cape Town** as more fully described in the schedule below, is hereby declared as a Provincial Heritage Site.

Schedule

The demarcation of the Provincial Heritage Site is as follows:

Erf 661, "the Langa Pass Office", in Langa, as described in the S.G No. L No 71/1988 Sheet 10

Significance

Black people were subject to laws restricting their freedom of movement and residence. Section 10 of Native Laws Amendment Act, 54 of 1952 required that a black person could only reside in a city like Cape Town if they could prove that they had been born there, lived continuously for fifteen years or more or had continuously worked for the same employer for a period of ten years or more. A 'pass' was a document required for lawful movement into, out of, or within a specified area; and had to be produced on demand by an authorised person. Failure to produce a pass constituted an offence. The passbook indicated the status of each person and had to be carried by black people at all times and regularly renewed.

Langa Pass Office and Court possess high historical significance. The history of the site holds importance in the community, in the pattern of South Africa's history and has strong and special association with the life or work of a person, group or organisation of importance. The Langa Pass Office is also significant in its association and role with the dompas system in the history of South Africa. The Langa Pass Office therefore bears significance in the memorialization of South Africa's history.

Colette Scheermeyer
Acting Chief Executive Officer
Heritage Western Cape

S. G. No. L. No. 71/1988
 SHEET No. 10 of 10 SHEETS
 APPROVED
 the Surveyor General
 1988/10/17



INSET SHEET

B C

(LANGA ALLOTMENT AREA 1)

GENERAL PLAN No. L No. 71/1988

(Continuing 10 sheets)

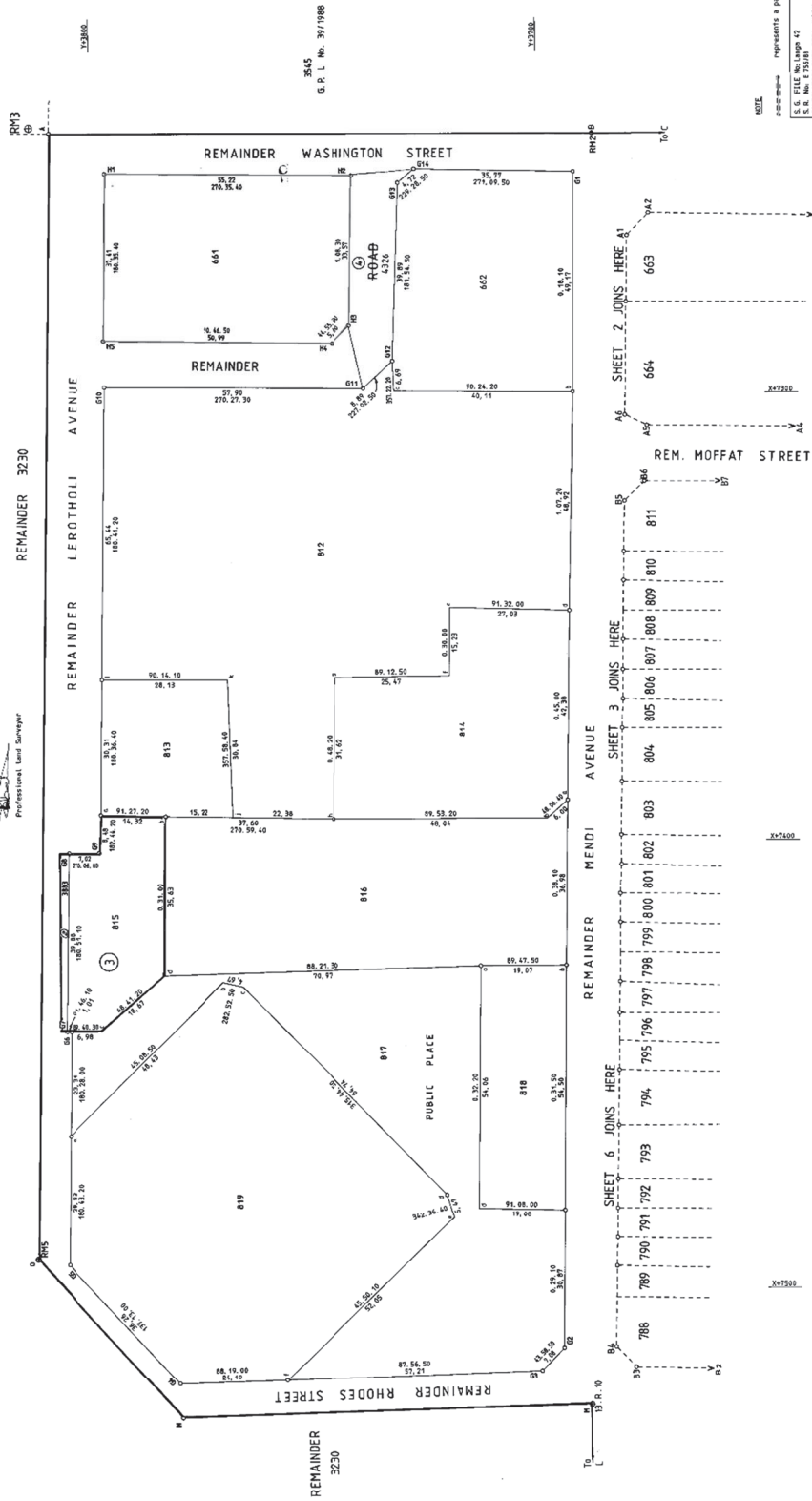
OF part of LANGA TOWNSHIP
 Comprising Subdivision of Erf 3585 LANGA
 Situate in the Municipality of Cape Town
 Administrative District of the Cape
 Province of the Cape of Good Hope

SCALE: 1/400

Surveyed in June - October 1987
 by me

Professional Land Surveyor

DE VILLIERS REID CHERRY and RIMMO Professional Land Surveyors



NOTE
 represents a party wall
 S. G. FILE No. Lang 47
 COMPLIATION NOS: 2384, 0850
 8889-2382, 0870

L No 71/88 SHT 10